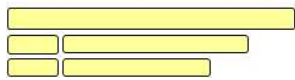
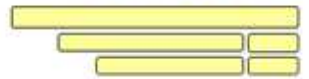


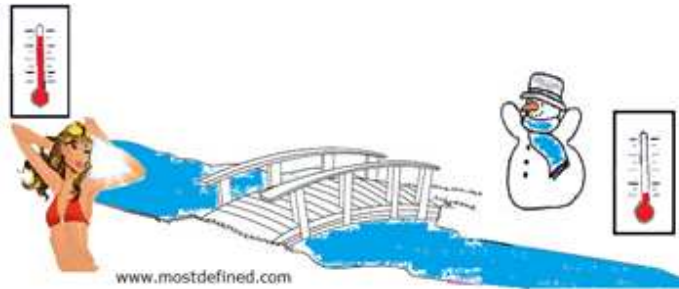
MOST DEFINED



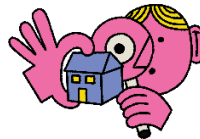
MOST DEFINED



thermal bridges

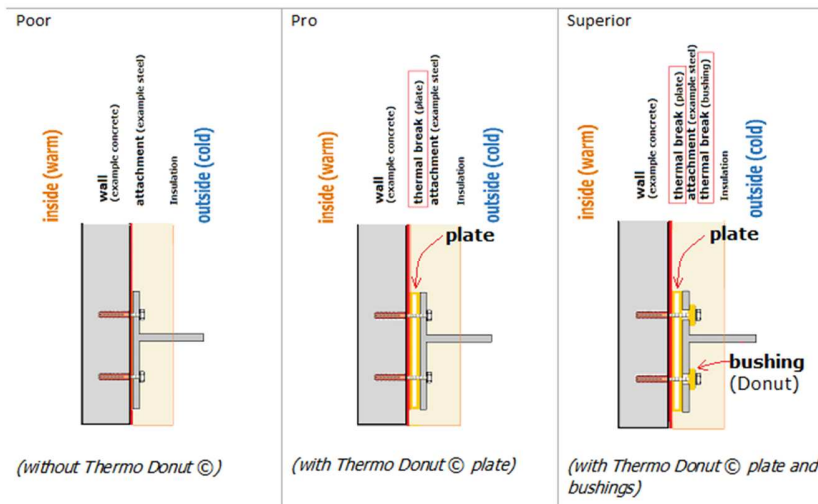


A thermal bridge is a highly conductive part of an object between a cold and a warm area and favors the flow of thermal energy between these areas.



If this object is a building, the valuable energy is actually intended for the inside temperature but is now lost and wasted! Again and again! Every year! For its life-time!

Thermal breaks are eliminating the flow of thermal energy.



The very tough thermal breaks from "Thermo Donut ©" have a very low thermal conductivity and a very high compressive strength! And even more very important material properties! They are applicable at extreme temperatures (from minus 50 °C (minus 58 °F) up to noncombustible). In addition they have the option "built-in gasket" (pro airtight and contra mold and mildew). The thermal breaks are individually (in almost any size) available.