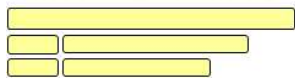
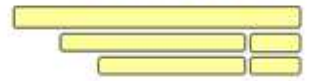


MOST DEFINED

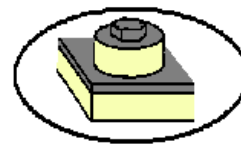
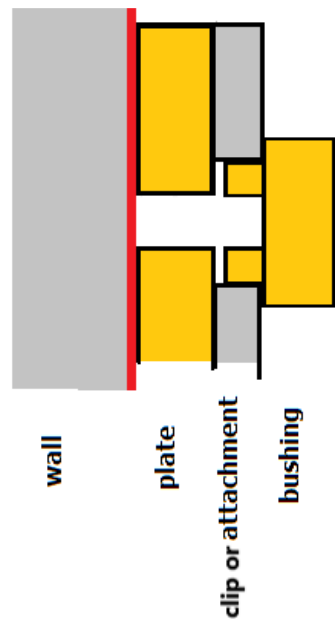


MOST DEFINED



Specification Sheet

Specification Sheet of Thermo Donut © System



Thermo Donut

Thermo Donut © is a system for attaching facades and all kind of “things” to a building. The System consists of the following components: (the components can be chosen together or individually)

Thermally broken plates	Thermally broken bushings	Façade clips	Attachments
(high performance plastic)	(high performance plastic)	(stainless steel or galvanized steel)	(stainless steel or galvanized steel)
<input type="checkbox"/>	<input type="checkbox"/>	<input type="checkbox"/>	<input type="checkbox"/>

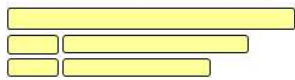
Size: plates; standard sizes see product documentation plus any size is available, can be chosen by purchaser

Size: bushings; standard are diameter 45mm (bushing 13) or diameter 24mm (bushing 4), other than that any size can be chosen by purchaser

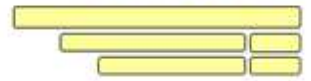
Size: façade clips; 38,1 mm x38,1 mm x 60 mm and larger. See product documentation

Size: attachments; 203,2 mm x 203,2 mm x 400 mm and larger. See product documentation

MOST DEFINED



MOST DEFINED



Specification Sheet

Weight: plates and bushings; depending on chosen material 0.7 to 2.1 gramm per cm³

Weight: façade clips and attachments; depending on chosen size (see product documentation)

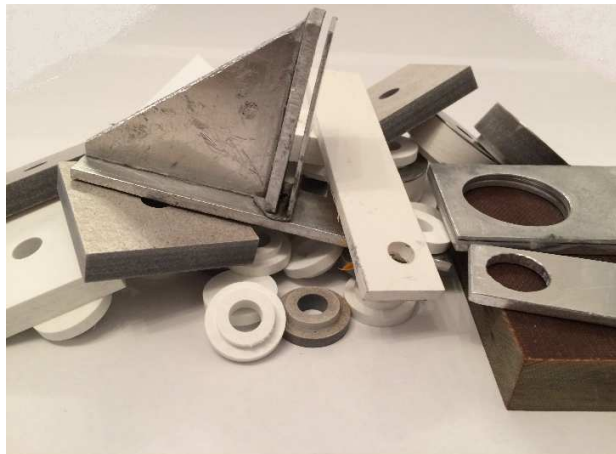
physical state: plates and bushings: see properties of different materials.

physical state: façade clips and attachment: regular stainless steel or galvanized steel

Testing: plates and bushings; see properties of different materials.

Testing: façade clips and attachments: no testing

Details: see product documentation



1. März 2019